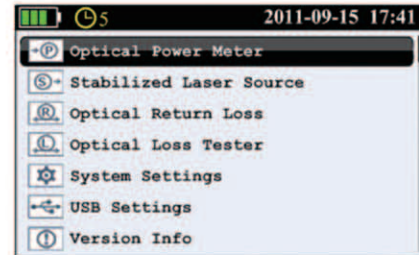


OLT-55 Intelligent Optical Loss Tester



OLT-55 Intelligent Optical Loss Tester is an all-in-one loss tester integrated with Stabilized Laser Source, Optical Power Meter, Optical Loss Tester, ORL Tester and Length Testing functions. It can perform automatic bidirectional loss test on single fiber with Pass/Fail assessment. With rich functions, flexible configuration and excellent user friendly design, OLT-55 is the ideal optical loss tester to completely evaluate the optical fiber link condition in FTTx, LAN and CATV network.



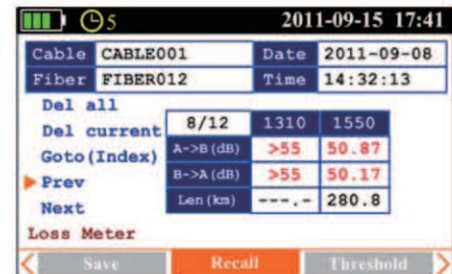
Features

- ◆ All-in-one: SLS + OPM + OLT + ORL + Length test
- ◆ Optical power monitoring (Auto power trace)
- ◆ Bidirectional loss test on single fiber
- ◆ ORL test
- ◆ Pass/Fail assessment
- ◆ Automatic wavelength identification/switch (AutoID)
- ◆ Remote reference value setting
- ◆ Internal clock & fiber S/N editable
- ◆ 1000 test records (CSV) storage & management
- ◆ Data transfer to PC via USB (Driver-free)
- ◆ Auto test records save in local unit/remote unit/both units
- ◆ USB power charging
- ◆ Over 35 hours continuous operation
- ◆ Multilanguage support
- ◆ No warm-up, quick start
- ◆ High resolution color LCD
- ◆ Pocketsize, lightweight and easy-to-use

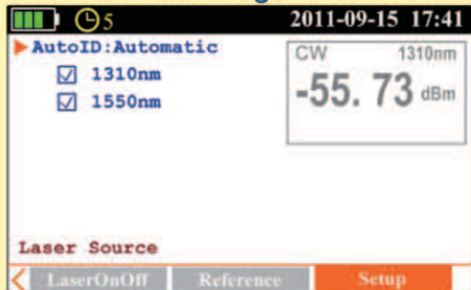


Automatic Bidirectional Loss Test on Single Fiber

Two OLT-55 at both ends of a single optical fiber can perform bidirectional loss test by just pressing one button and can automatically measure and display the entire fiber attenuation to help users acquire complete and accurate optical fiber loss information.



Automatic Wavelength Identification



Optical Power Monitoring



Specifications

Model	OLT-55		
Stabilized Laser Source			
Wavelength ($\pm 20\text{nm}$)	1310/1550nm	1310/1490/1550nm	1310/1550/1625nm
Spectrum Width	$\leq 5\text{nm}$		
Emitter Type	FP-LD		
Output Power	$> -4\text{dBm}$		
Power Stability	$\pm 0.05\text{dB}/15\text{min}; \pm 0.10\text{dB}/8\text{hr}$		
Output Mode	CW, 270Hz, 1KHz, 2KHz		
Optical Power Meter			
Calibrated Wavelength	850, 1300, 1310, 1490, 1550, 1625nm		
Power Range (dBm)	$-70 \sim +10$ ($-60 \sim +10@850\text{nm}$)	$-50 \sim +27$	
Display Unit	W/mW/ μ W/nW/pW/dBm/dB(REF)		
Detector Type	InGaAs		
Accuracy	$\pm 5\% \pm 0.01\text{nW}$ ($\pm 0.5 \text{ dB}@850\text{nm}$)	$\pm 5\% \pm 1\text{nW}$ ($\pm 0.5 \text{ dB}@850\text{nm}$)	
Resolution	0.01dB		
Auto Wavelength Identification	Yes (With ShinewayTech specified Stabilized Laser Source)		
MOD Identification	270Hz, 1KHz, 2KHz		
Optical Loss Test			
Link Loss Range	50dB (1550nm, 200km)		
Link Loss Accuracy	$\pm 0.25\text{dB}$		
Link Loss Test Time	< 2 seconds per wavelength		
ORL Test (Optional)			
ORL Range	0~60dB (APC connector)		
ORL Accuracy	$\pm 0.75\text{dB}@ (0\sim 50\text{dB}), \pm 1.5\text{dB}@ (50\sim 60\text{dB})$		
ORL Uncertainty	$\pm 0.5\text{dB}@20\text{dB}$		

General Specifications

Connector	FC (Interchangeable SC, ST)
Data Storage	1000 records
Data Interface	USB
Backlight Display	Yes
Auto Off	Yes (Auto-off after 5 minutes idle)
Power Supply	Lithium Battery/AC Adapter
Battery Life	Continuous operation ≥ 35 hours
Operating Temperature	$0^{\circ}\text{C} \sim 50^{\circ}\text{C}$
Storage Temperature	$-20^{\circ}\text{C} \sim 70^{\circ}\text{C}$
Relative Humidity	0 ~ 95% (Non-condensing)
Weight	350g
Dimensions (H x W x T)	177x80x44mm

* Specifications subject to change without notice

Ordering Information

