

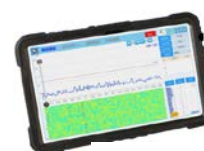
## Optical Cable Routing Calibrator

## CRC-04

CRC-04 Optical Cable Routing Calibrator adopts the principle of distributed optical fiber vibration sensing, transforming the communication optical cable into a micro-vibration sensor. Any position of the optical cable can sense the surrounding disturbance information. When the ground, manhole cover or pole above the target optical cable is knocked, the vibration will be transmitted to the optical cable. CRC-04 can accurately identify the knocking event, accurately locate the knocking position, and synchronize the test data to the technician's handheld PAD terminal.



CRC-04 Main Unit

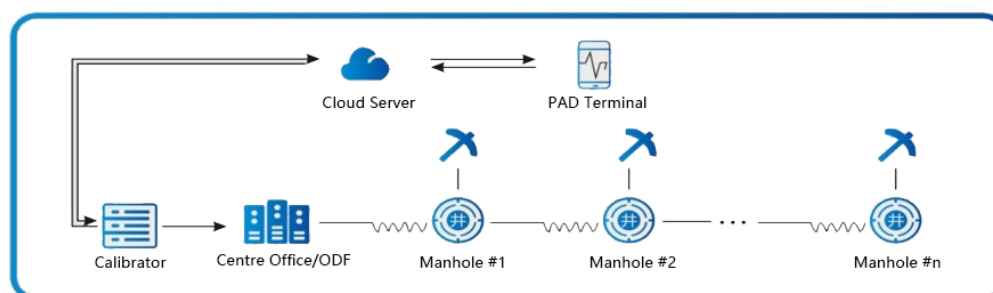


PAD Terminal

CRC-04 Optical Cable Routing Calibrator can search and locate buried optical cables, pipeline optical cables, and overhead optical cables, generate data on the specific locations of optical cable junction boxes, breakpoints, and optical loss points, provide maintenance services for optical cable lines and pipeline construction, improve the work efficiency of optical cable line maintenance technicians in order to understand the overall status of optical cables.

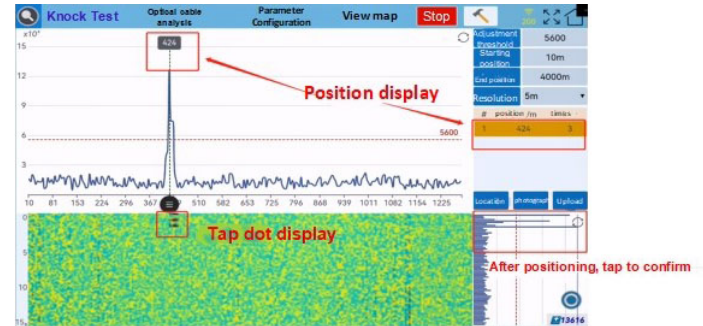
### Key Features

- ◆ Compact & light-weight, easy for carrying and suitable for testing in field
- ◆ Multi-function in one single unit: DVS Test ( $\emptyset$ -OTDR), OTDR and VFL
- ◆ 4-channel optical cable connection to improve maintenance efficiency
- ◆ Knock the manhole cover or ground surface to verify the cable route
- ◆ Only one technician can complete on-site testing in order to reduce OPEX
- ◆ Obtain the information of longitude, latitude and distance information of knocking point
- ◆ Maximal test distance: 50KM for DVS Test ( $\emptyset$ -OTDR)
- ◆ Real-time display of results with high accuracy

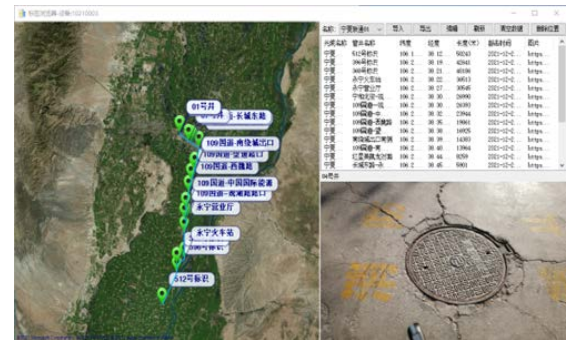
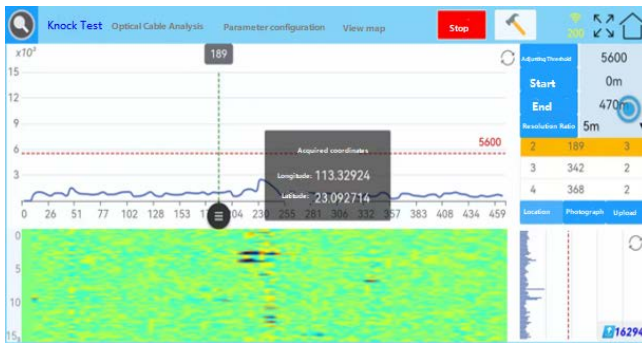


## Advantages / Benefit

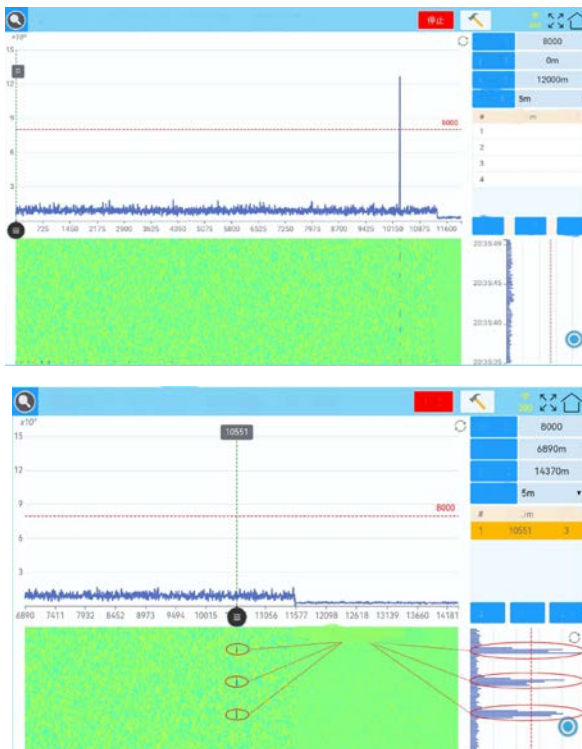
- ◆ Knock the manhole cover to verify whether the target cable exists, reducing the operation time to open the manhole cover



- ◆ Obtain the latitude and longitude information of the knocking point in real time and synchronize with GIS map together with the picture of the knocking point



- ◆ Pinpoint the target cable from cable bundles with the same route.



## Specifications

Model	CRC-04
Number of Channels	4 Channels
<b>DVS Test</b>	
Wavelength	1550nm
Testing Distance	50KM
Positioning Accuracy	± 2m
Depth of Detection	≤ 3m
Working Frequency	1K~10 KHz
Sensitivity	<0.1nε@5~100Hz
Connector	FC/APC
<b>OTDR Test</b>	
Wavelength	1550nm
Dynamic Range	≥ 30dB
Event Dead Zone	≤ 1m
Attenuation Dead Zone	≤ 5m
Minimal Pulse Width	10ns
Test Mode	Auto/Manual
Sampling Resolution	0.32 ~ 5m
Distance Uncertainty	± (1m + 5×10 <sup>-5</sup> × distance + sampling resolution)
Connector	FC/APC
<b>VFL</b>	
Wavelength	650nm
Output Power	20mW
Modulation	CW, 1Hz
Connector	FC/APC
<b>General Specification</b>	
Power Supply	AC/DC Adaptor, input 100~240VAC, 50~60Hz; Lithium Battery, 10200mAh
Battery Life	≥ 5 hours for continuous operation
Power Consumption	18.5W
Interfaces	USB*2, RJ45*1, HDMI*1, 4G/LTE SIM Card Slot*1, 4G/LTE Antenna Interface*1
Dimensions of Main Unit	258MM(L)*208MM(W)*83MM(H)
Weight of Main Unit	3.5KG
Operation Temperature	0°C ~ 40°C
Storage Temperature	-10°C ~ 70°C
Humidity	0~95% (non-condensing)

Note: Specifications are subject to change at any time without prior notice.

## Ordering Information

Standard Package Includes:

Main Unit \*1, Pad Terminal \*1, 4G/LTE Antenna \*1, USB WIFI Adaptor \*1, Plastic Hammer \*1, AC/DC Adaptor \*1, Optical Fiber Cleaning Pen \*1, Patch Cord \*4, FC Flange \*5, User Manual \*1, Warranty Card \*1, Hard Carrying Case \*1