

ShinewayTech®

Up to 18 CWDM wavelengths in one OTDR



Hand-held High Performance OTDR

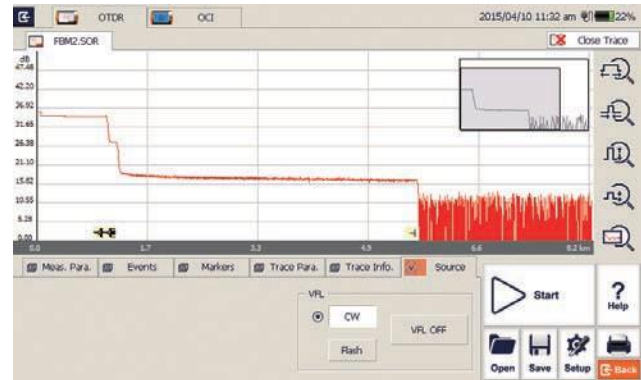
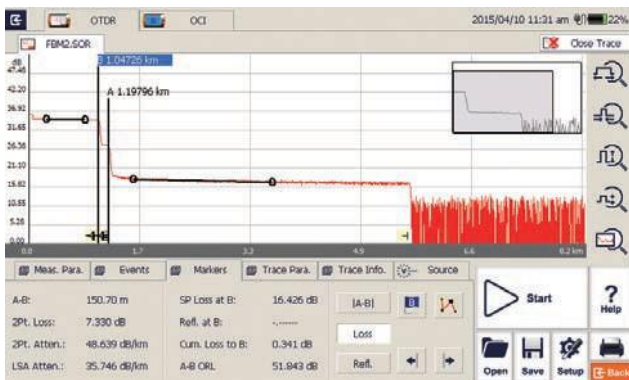
# MTP-200-CWDM Series

## Multi-Function and High Performance OTDR Testing

- Up to 18 CWDM wavelengths, customizable
- Dynamic Range up to 36dB
- Short zone: EDZ 1m, ADZ 4m
- Auto/Manual test and analysis
- Multi-wavelength testing
- Visible laser source function
- Fault locating, fiber length/loss/return loss measurement, connector/ splice/ splitter/ macro bend/fiber-end detection
- GR-196-CORE (.SOR) file format
- SOR and JPG file format
- Flexible file naming
- LinkImage smart graphic analysis

## Optimized Platform Performance

- Lightweight, 2.1kg
- 7 inch touch screen
- Windows user interface for easy operation
- Damp-dust-shock proof
- 10 hours continuous operation
- Supports WiFi/Bluetooth/GPS
- Direct printing function(compatible with PCL printers)
- Remote/local control by PC



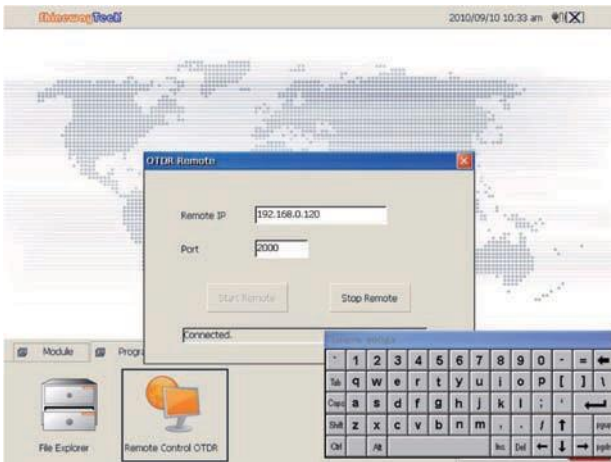
## MTP Suite PC Software

- Multi traces analysis
- Single/multi traces printing in one report
- Batch editing and printing
- Bidirectional traces analysis
- CSV report formats
- Remote control function



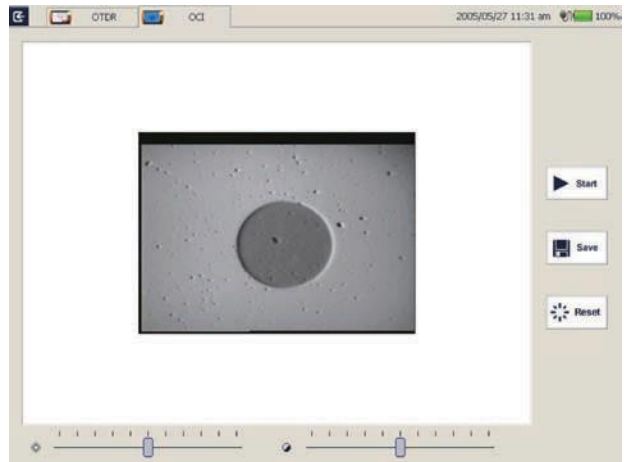
## Network Remote Control Module (optional)

- Convenient networking
- Remote control instrument operation



## Optical Connector Inspector Module (optional)

- Focusing knob for fast focus
- Eye-safe and clear video viewing
- Interchangeable connector tips



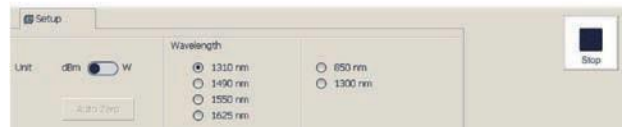
## Stabilized Laser Source Module (optional)

- Wavelength same as the OTDR
- High precision and easy operation



## Optical Power Meter Module (optional)

- Multi-wavelength Calibration
- High Precision
- Convenient Operation



## Applications

- Installation Stage
- Service Deployment
- Maintenance Stage

## Specifications

MTP-200 Series	
Display	7 inch TFT Touch Screen (800x480)
Connectivity	USBx2; 10/100Mbit/s RJ-45x1
Memory	2GB
Power Supply	Rechargeable Li-Ion Battery/AC Adapter
Battery Life	10 hours continuous operation
Working Temp.	-20°C - 50°C
Storage Temp.	-40°C - 60°C
Humidity	0 - 95% (Non-Condensing)
Weight	2.1kg
Dimensions (LxWxH)	290x175x75mm

OTDR Module	Wavelength <sup>(1)</sup>		
MTP-200-CWDM-4A	1271/1291/1311/1331		
MTP-200-CWDM-4B	1351/1371/1391/1411		
MTP-200-CWDM-4C	1351/1411/1431/1451		
MTP-200-CWDM-4D	1431/1451/1471/1491		
MTP-200-CWDM-4E	1471/1491/1511/1531		
MTP-200-CWDM-4F	1511/1531/1551/1571		
MTP-200-CWDM-4G	1551/1571/1591/1611		
MTP-200-CWDM-8A	1471/1491/1511/1531/1551/1571/1591/1611		
MTP-200-CWDM-16	1271/1291/1311/1331/1351/1411/1431/1451/1471/1491/1511/1531/1551/1571/1591/1611		
MTP-200-CWDM-18	1271/1291/1311/1331/1351/1371/1391/1411/1431/1451/1471/1491/1511/1531/1551/1571/1591/1611		
Dynamic Range <sup>(2)</sup>	36dB		
Dead Zone <sup>(3)</sup>	EDZ: 1m, ADZ: 4m		
Selectable Range	SM: 1.3, 2.5, 5, 10, 20, 40, 80, 160, 240Km		
Pulse Width	SM: 5ns, 10ns, 30ns, 100ns, 300ns, 1μs, 2.5μs, 10μs, 20μs		
Sampling Points	256000		
Averaging Time	Quick, 15s, 30s, 45s, 60s, 90s, 120s, 180s		
Connector	FC/PC (Interchangeable SC, ST and LC)		
Distance Accuracy	$\pm(0.75m + 5 \times 10^{-5} \times \text{distance} + \text{sampling resolution})$		
Attenuation Accuracy	$\pm 0.05 \text{ dB/dB}$		
Reflection Accuracy	$\pm 4 \text{ dB}$		
Visible Laser Source	Output Power: $\geq -3\text{dBm}$	MOD Frequency: 1Hz	Detecting Range: 5Km

### MCI100 Optical Connector Inspector Module (Optional)

Field of View	400μm x 300μm
Resolution	$\leq 1.5\mu\text{m}$
Focusing	Manual Focus
Microscope Dimensions	Ø32x175mm

### LS100 Stabilized Laser Source (Optional)

Wavelength ( $\pm 20\text{nm}$ )	Same as OTDR's
Output Power	$\geq -7\text{dBm}$

<b>PM100 Normal Power Meter Module (Optional)</b>	
Calibrated Wavelength	850nm, 1300nm, 1310nm, 1490nm, 1550nm, 1625nm, 1650nm
Measurement Range	-70dBm - +6dBm (-60dBm - +6dBm @ 850nm)
Detector Type	InGaAs
Display Resolution	0.01dB
Accuracy	$\pm 5\% \pm 0.01\text{nW}$ ( $\pm 0.5\text{dB}$ @850nm)

\*Specifications subject to change without notice

#### **Notes**

- (1) Wavelength is open for customization
- (2) Dynamic range measurement at 20 $\mu$ s pulse width and 180s averaging time;
- (3) Dead Zone measurement at 0.6Km and reflection <-45dB; EDZ measurement at 5ns, ADZ measurement at 10ns.

## **Order Information:**

#### **Standard Package**

MTP-200 Host, Lithium Battery, CD, Software, Data Cable, Carrying Case, Warranty card, Calibration Certificate

#### **Optional Module:**

LS100: Stabilized Laser Source Module (as OTDR)

PM100: Optical Power Meter Module

MCI100: Optical Connector Inspector Module

RC100: Remote control Module

LM100: Link Image Module

