

Hand-held High Performance OTDR

ShinewayTech® MTP-200X series is the compact multi-functional platform, with 8 inch high-resolution touch screen, which are specially designed for FTTx / WAN applications and can meet all test requirements of installers, contractors and service operators during network installation, construction, maintenance and troubleshooting.

It is convenient and accurate for auto/manual testing, multi-wavelength testing and multifunctional analysis.



Hand-held High Performance OTDR

MTP-200X Series

ShinewayTech
receives Frost & Sullivan
Global FOTE Price Performance Value
Leadership Award



Multi-Function and High Performance OTDR Testing

- ◆ Dynamic range up to 50dB
- ◆ Short zone: EDZ 0.8m, ADZ 4m
- ◆ Auto / manual test and analysis
- ◆ Multi-wavelength testing
- ◆ Visual fault locator function
- ◆ SOR, JPG and PDF file format
- ◆ Flexible file naming
- ◆ GR-196-CORE (.SOR) file format
- ◆ In-Line test and through splitter test (1625/1650nm with filter)
- ◆ OTDR module up to four wavelengths, SM/MM option
- ◆ Fault locating, fiber length / loss / return loss measurement, connector / splice / splitter / macro bend / fiber-end detection



Optimized Platform Performance

- ◆ Lightweight, 1.5kg with battery
- ◆ 8 inch touch screen
- ◆ High strength protect horn
- ◆ Excellent Man-Machine interface
- ◆ Easy operation
- ◆ Optimized power management: 10 hours continuous operation
- ◆ Remote/local control by PC (Optional)



High Resolution 8 inch Color Touch Screen

- ◆ 8 inch touch screen
- ◆ Damp-dust-shock proof
- ◆ Quick response, clear display and convenient operation.



Link Image (LM100) – REMOVING THE COMPLEXITY FROM OTDR TESTING Meter Module (optional)

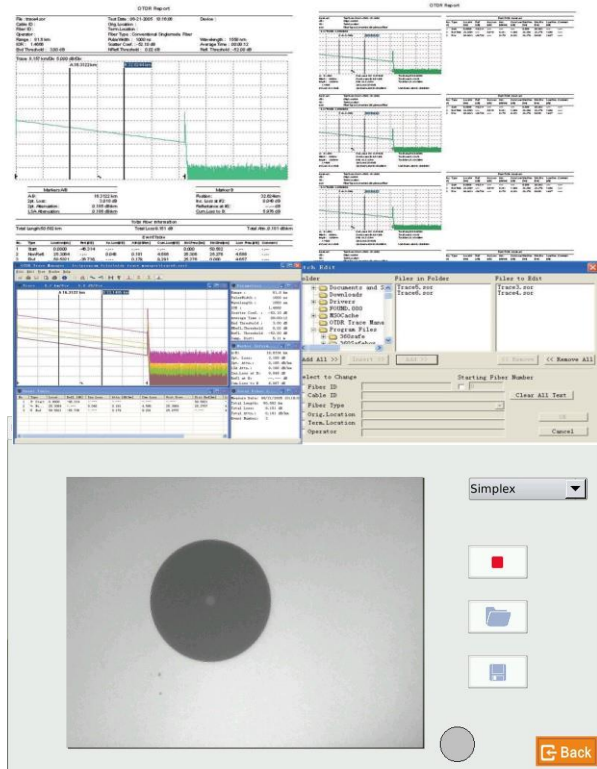
Link Image software helps technicians use an OTDR more creatively, without the need to understand or interpret OTDR results. It converts the graphic data points obtained from traditional single pulse trace into reflective or non-reflective icons which gives users a schematic view of the entire link.

- ◆ Icon-based fiber link view of all events
- ◆ Automatic pass/fail results
- ◆ Eliminates the need for OTDR expertise



MTP Suite PC Software

- ◆ Multi traces analysis and comparison
- ◆ Batch editing and printing
- ◆ CSV report formats
- ◆ Remote control function (Optional)



Network Remote Control Module (optional)

- ◆ Remote control instrument operation

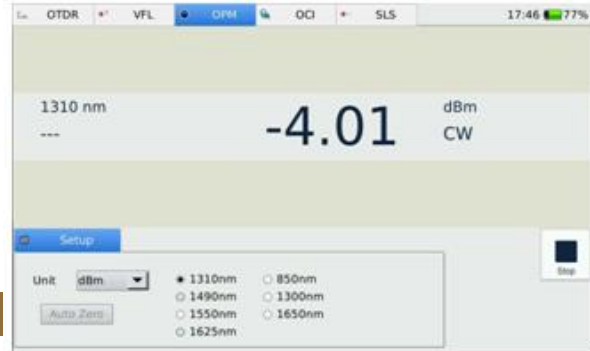
Optical Connector Inspector Module (optional)

- ◆ Focusing knob for fast focus
- ◆ Eye-safe and clear video viewing
- ◆ Interchangeable connector tips

Stabilized Laser Source Module (optional)

- ◆ Wavelength same as the OTDR
- ◆ High precision and easy operation

- ◆ Multi-wavelength Calibration
- ◆ High Precision
- ◆ Convenient Operation



- ◆ F I X / P O N NETWORKS
- ◆ Local Area Networks (LAN)
- ◆ Metropolitan Area Networks (MAN)
- ◆ Long Haul Networks

Technical Specifications

Model	MTP-200X Series			
Display	8- inch Color Touch Screen (800×480)			
Connectivity	USB×2; 10/100Mbit/s RJ-45×1			
Memory	8GB			
Power Supply	Rechargeable Li-Ion Battery/AC Adapter			
Battery Life	10 hours continuous operation			
Working Temp.	-20°C - 50°C			
Storage Temp.	-40°C - 60°C			
Humidity	0 - 95% (Non-Condensing)			
Weight	1.5kg			
Dimensions (LxWxH)	235×159×75mm			
OTDR Module	Wavelength (±20nm)	Dynamic Range (dB) ⁽¹⁾	EDZ (m) ⁽²⁾	ADZ(m) ⁽²⁾
MTP-200X-20VC	1310/1550	38/37	0.8	4
MTP-200X-20VD	1310/1550	45/43	0.8	4
MTP-200X-20VF	1310/1550	50/48	0.8	4
MTP-200X-31VCPL	1310/1550/1625	43/41/40	0.8	4
MTP-200X-33VC	1310/1550/1650	42/40/39	0.8	4
MTP-200X-40VC	850/1300/1310/1550	23/28/38/36	1	4.5/4.5/4/4
Selectable Range	SM: 1.3, 2.5, 5, 10, 20, 40, 80, 160, 240Km			
	MM: 1.3, 2.5, 5, 10, 20, 40Km			
Pulse Width	SM: 5ns,10ns, 30ns, 100ns, 300ns,1μs, 2.5μs,10μs, 20μs			
	MM: 5ns, 10ns, 30ns, 1μs, 2.5μs			
Averaging Time	Quick, 15s, 30s, 45s, 60s, 90s, 120s, 180s			
Emitter Type	LD			

Connector	FC/PC (Interchangeable SC, ST and LC)		
Distance Measure Accuracy	$\pm(1m + 10^{-5} \times \text{distance} + \text{sampling spacing})$		
Attenuation Detect Accuracy	$\pm 0.05 \text{ dB/dB}$		
Reflection Detect Accuracy	$\pm 4 \text{ dB}$		
Visual Fault Locator	Output Power: $\geq -3\text{dBm}$	MOD Frequency: 1Hz	Detecting Range: 5Km
MCI100 Optical Connector Inspector Module (Optional)			
Field of View	400 μm ×300 μm		
Resolution	$\leq 1.5\mu\text{m}$		
Focusing	Manual Focus		
Microscope Dimensions	$\varnothing 32 \times 175\text{mm}$		
LS100 Stabilized Laser Source (Optional)			
Wavelength ($\pm 20\text{nm}$)	Same as OTDR's		
Output Power	$\geq -7\text{dBm}$		
PM100 Normal Power Meter Module (Optional)			
Calibrated Wavelength	850nm, 1300nm, 1310nm, 1490nm, 1550nm, 1625nm, 1650nm		
Measurement Range	-70dBm~ +6dBm (-60dBm - +6dBm @ 850nm)		
Detector Type	InGaAs		
Display Resolution	0.01dB		
Accuracy	$\pm 5\% \pm 0.01\text{nW}$ ($\pm 0.5\text{dB}$ @850nm)		

*Specifications subject to change without notice

Notes:

- (1) Dynamic range measurement at 20 μs pulse width and 180s averaging time;
- (2) Dead Zone measurement at 0.6Km and reflection $< -45\text{dB}$; EDZ measurement at 5ns, ADZ measurement at 10ns.

Order Information

Standard Package:

MTP-200X Host, Lithium Battery, CD (Software & User Manual), AC Adapter, Carrying Case, Warranty Card, Calibration Certificate

Optional Module:

- ◆ LS100: Stabilized Laser Source Module (as OTDR)
- ◆ PM100: Optical Power Meter Module
- ◆ MCI100: Optical Connector Inspector Module
- ◆ RC100: Remote control Module
- ◆ LM100: Link Image Module

